

NOW AVAILABLE!  
NOW AVAILABLE!  
NOW AVAILABLE!



# Gary's QuickSteak®

Since 1981 **Real Steak...Real Fast**



Contact your Dennis AE for samples and information.



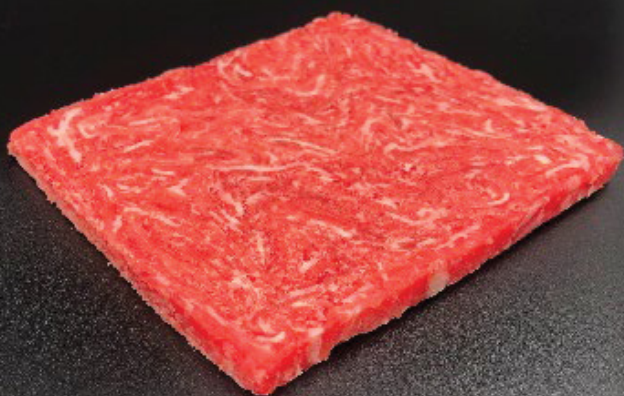
## Gary's QuickSteak®

Since 1981 **Real Steak...Real Fast**

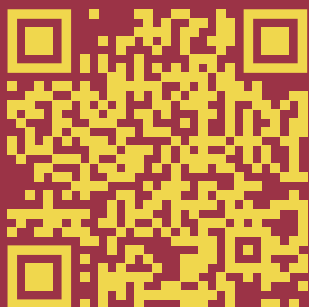
- #29594 **Legendary Puck 53/3oz**
- #29595 **Legendary Puck 40/4oz**
- #29596 **Legendary Puck 32/5oz**
- #29597 **Quick Release Flat 40/4oz**

# WHY Gary's?

- Faster Cook Time
- 100% Sirloin Steak
- Whole Muscle
- Midwest Beef
- Evenly Marbled
- Juicy Slices
- Tender Bite
- Versatile Menu Use
- Portion Controlled
- No Soy, Starches or Allergens



**Quick release. Easy to cook & train. Patented Process!**



**SEE OUR  
FOODSERVICE  
PRODUCTS**

[garysquicksteak.com](http://garysquicksteak.com)

*Gary's*  
**QuickSteak®**  
*Since 1981* **Real Steak...Real Fast**



**NOW AVAILABLE!**  
**NOW AVAILABLE!**

**Dennis**  
FOOD SERVICE  
100% EMPLOYEE OWNED

**Contact your Dennis Account Executive for information!**