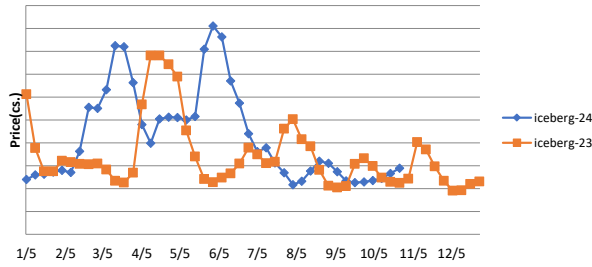


Produce

Iceberg Lettuce (24 count)



Tomatoes were the only real highlight of the big five in last week's round of produce prices. While the 25 lb. large mature green variety continued to rip higher on seasonally deflated volumes out of Mexico as well as hurricane damage in the East, 25 lb. large romas somewhat surprisingly fell 7% w/w. For the most part, the same problems driving the mature greens higher are affecting romas as well, so given that last week's \$22/carton average for romas was still pretty close to normal for this time of year despite the hurricane damage, we'll probably see another turnaround higher in this week's prices. We're not expecting another drawn-out rally before the end of the year, though, as prices for both tend to weaken from mid-November to December. Elsewhere, 48-count hass avocados and 24-count iceberg lettuce continued to slowly gain. Both are approaching some typical seasonal peaks, though, so we might see one or both turn lower over the next month. Avocados probably have the best chance for some weakness out of the two as the iceberg average is still nowhere near where it normally is in late October. Price bases noted below.

Description	Market Trend	Supplies	Price vs. Last Year
Limes (150 ct)	Decreasing	Available	Lower
Lemons (95 ct)	Increasing	Short	Lower
Lemons (200 ct)	Steady	Available	Lower
Honeydew (6 ct)	Increasing	Available	Lower
Cantaloupe (15 ct)	Steady	Steady-Available	Lower
Blueberries (12 ct)	Increasing	Short	Higher
Strawberries (12 pnt)	Steady	Short	Lower
Avocados (Hass 48 ct)	Increasing	Steady	Higher
Bananas (40 lb) Term	Steady	Steady-Short	Higher
Pineapple (7 ct) Term	Decreasing	Available	Lower
Idaho Potato (60 ct 50 lb)	Steady	Available	Lower
Idaho Potato (70 ct 50 lb)	Decreasing	Available	Lower
Idaho Potato (70 ct) Term	Decreasing	Steady-Available	Lower
Idaho Potato (90 ct 50 lb)	Decreasing	Short	Lower
Idaho Potato #2 (6 oz 100 lb)	Steady	Steady-Available	Steady
Processing Potato (cwt)	Decreasing	Steady-Available	Lower
Yellow Onions (50 lb)	Steady	Steady	Higher
Yellow Onions (50 lb) Term	Increasing	Available	Higher
Red Onions (25 lb) Term	Steady	Available	Higher
White Onions (50 lb) Term	Increasing	Steady	Higher
Tomatoes (lg case)	Increasing	Short	Higher
Tomatoes (5x6 lb) Term	Steady	Short	Higher
Tomatoes (4x5 vine ripe)	Increasing	Short	Higher
Roma Tomatoes (lg case)	Decreasing	Short	Higher
Roma Tomatoes (xlg case)	Decreasing	Steady-Short	Higher
Green Peppers (lg case)	Steady	Available	Steady
Red Peppers (lg 15 lb case)	Steady	Available	Higher
Iceberg Lettuce (24 ct)	Increasing	Steady-Short	Higher
Iceberg Lettuce (24 ct) Term	Increasing	Steady-Available	Higher
Leaf Lettuce (24 ct)	Decreasing	Available	Higher
Romaine Lettuce (24 ct)	Increasing	Steady	Higher
Mesculin Mix (3 lb) Term	Steady	Short	Higher
Broccoli (14 ct)	Decreasing	Available	Higher
Squash (1/2 bushel)	Steady	Available	Lower
Zucchini (1/2 bushel)	Steady	Steady-Available	Higher
Green Beans (bushel)	Steady	Short	Lower
Spinach (flat 24)	Decreasing	Steady	Higher
Mushrooms (10 lb lg) Term	Steady	Short	Higher
Cucumbers (bushel)	Increasing	Steady-Short	Higher
Pickles (200-300 ct) Term	Increasing	Short	Higher
Asparagus (sm)	Decreasing	Available	Lower
Freight (truck CA-Cty Av)	Steady	Steady	Higher