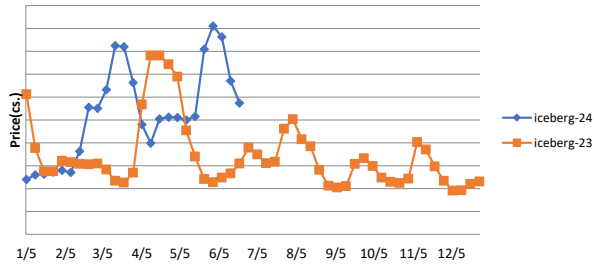


Produce

Iceberg Lettuce (24 count)



48-count hass avocados climbed another 13.2% w/w due to the recall of USDA inspectors back to the U.S. and subsequent halt on imports from Mexico that we highlighted last week. A deal has apparently been reached to resume imports across the border, so hopefully we can start our typical July to October downturn within the next few weeks. The processing potato average falling 17.3% was a welcome surprise. We didn't really believe the price jumps in June were a sign of the yearly late-summer surge starting early, but we also didn't think we would see a correction back lower before the actual surge starts either this month or next. 50 lb. yellow onions' 21.7% decline was another slight surprise as we didn't think we would get a significant downturn until after July. Nevertheless, the \$11.75 per sack average is a pretty typical level for the final five months of the year, so hopefully we can look forward to some stability (this is produce though so we're holding our breath). Price bases noted below.

Description	Market Trend	Supplies	Price vs. Last Year
Limes (150 ct)	Steady	Steady	Higher
Lemons (95 ct)	Steady	Steady	Lower
Lemons (200 ct)	Increasing	Steady-Available	Higher
Honeydew (6 ct)	Increasing	Steady	Lower
Cantaloupe (15 ct)	Steady	Available	Higher
Blueberries (12 ct)	Steady	Steady	Lower
Strawberries (12 pnt)	Increasing	Short	Lower
Avocados (Hass 48 ct)	Increasing	Steady-Available	Higher
Bananas (40 lb) Term	Decreasing	Steady	Higher
Pineapple (7 ct) Term	Increasing	Available	Lower
Idaho Potato (60 ct 50 lb)	Steady	Available	Lower
Idaho Potato (70 ct 50 lb)	Steady	Available	Lower
Idaho Potato (70 ct) Term	Increasing	Available	Lower
Idaho Potato (90 ct 50 lb)	Steady	Available	Lower
Idaho Potato #2 (6 oz 100 lb)	Steady	Available	Lower
Processing Potato (cwt)	Decreasing	Available	Lower
Yellow Onions (50 lb)	Decreasing	Short	Lower
Yellow Onions (50 lb) Term	Decreasing	Steady-Available	Lower
Red Onions (25 lb) Term	Decreasing	Steady	Higher
White Onions (50 lb) Term	Decreasing	Short	Lower
Tomatoes (lg case)	Increasing	Steady	Lower
Tomatoes (5x6 lb) Term	Steady	Short	Higher
Tomatoes (4x5 vine ripe)	Increasing	Steady	Lower
Roma Tomatoes (lg case)	Increasing	Steady-Available	Higher
Roma Tomatoes (xlg case)	Increasing	Steady	Higher
Green Peppers (lg case)	Steady	Steady	Higher
Red Peppers (lg 15 lb case)	Steady	Short	Higher
Iceberg Lettuce (24 ct)	Decreasing	Steady-Available	Higher
Iceberg Lettuce (24 ct) Term	Decreasing	Steady	Higher
Leaf Lettuce (24 ct)	Decreasing	Steady	Higher
Romaine Lettuce (24 ct)	Decreasing	Steady-Available	Higher
Mesculin Mix (3 lb) Term	Decreasing	Steady-Short	Lower
Broccoli (14 ct)	Increasing	Steady-Available	Higher
Squash (1/2 bushel)	Steady	Steady-Short	Higher
Zucchini (1/2 bushel)	Steady	Available	Higher
Green Beans (bushel)	Steady	Steady	Lower
Spinach (flat 24)	Increasing	Steady-Available	Higher
Mushrooms (10 lb lg) Term	Steady	Short	Higher
Cucumbers (bushel)	Increasing	Steady	Lower
Pickles (200-300 ct) Term	Increasing	Steady	Higher
Asparagus (sm)	Increasing	Steady	Lower
Freight (truck CA-Cty Av)	Decreasing	Steady-Short	Lower