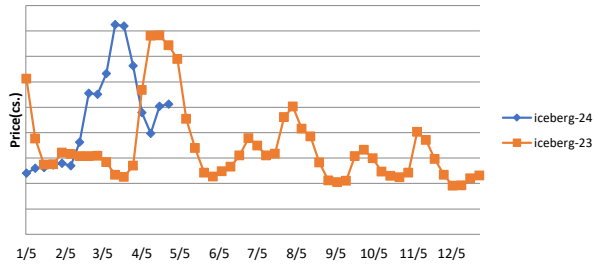


Produce

Iceberg Lettuce (24 count)



Last week was pretty quiet for produce with no real surprises coming from any of the big items. 48-count hass avocados climbed 5.4% w/w to a new YTD high, which was a little unexpected but still within the realm of possibility. The market's been a little deflated vs. usual since early March, so we're not expecting a downward correction from here. 50 lb. yellow onions continued their steady decline, now sitting at a 14-week low, but they still have a long way to go before getting back into what could be considered normal seasonal territory. Onions are usually building up steam for a May-July runup right about now, but we think correctional weakness will be the name of the game for at least another month or so. 25 lb. large tomatoes were up again last week and are still a little more expensive than normal for late April, so we're hoping to see another downturn across the first half of May. 24-count iceberg lettuce was basically level w/w after the surprise uptick in the prior week, so we're still waiting on some correctional weakness there as well. Price bases noted below.

| Description | Market Trend | Supplies | Price vs. Last Year |
|-------------------------------|--------------|------------------|---------------------|
| Limes (150 ct) | Steady | Steady | Lower |
| Lemons (95 ct) | Increasing | Steady | Lower |
| Lemons (200 ct) | Increasing | Steady-Available | Higher |
| Honeydew (6 ct) | Decreasing | Steady | Lower |
| Cantaloupe (15 ct) | Decreasing | Available | Lower |
| Blueberries (12 ct) | Decreasing | Steady | Higher |
| Strawberries (12 pnt) | Steady | Short | Lower |
| Avocados (Hass 48 ct) | Increasing | Steady-Available | Higher |
| Bananas (40 lb) Term | Decreasing | Steady | Higher |
| Pineapple (7 ct) Term | Steady | Available | Lower |
| Idaho Potato (60 ct 50 lb) | Steady | Available | Lower |
| Idaho Potato (70 ct 50 lb) | Decreasing | Available | Lower |
| Idaho Potato (70 ct) Term | Decreasing | Available | Lower |
| Idaho Potato (90 ct 50 lb) | Decreasing | Available | Lower |
| Idaho Potato #2 (6 oz 100 lb) | Steady | Available | Lower |
| Processing Potato (cwt) | Steady | Available | Lower |
| Yellow Onions (50 lb) | Decreasing | Short | Higher |
| Yellow Onions (50 lb) Term | Decreasing | Steady-Available | Higher |
| Red Onions (25 lb) Term | Increasing | Steady | Higher |
| White Onions (50 lb) Term | Decreasing | Short | Higher |
| Tomatoes (lg case) | Increasing | Steady | Higher |
| Tomatoes (5x6 lb) Term | Steady | Short | Higher |
| Tomatoes (4x5 vine ripe) | Increasing | Steady | Higher |
| Roma Tomatoes (lg case) | Increasing | Steady-Available | Higher |
| Roma Tomatoes (xlg case) | Increasing | Steady | Higher |
| Green Peppers (lg case) | Increasing | Steady | Lower |
| Red Peppers (lg 15 lb case) | Steady | Short | Higher |
| Iceberg Lettuce (24 ct) | Increasing | Steady-Available | Lower |
| Iceberg Lettuce (24 ct) Term | Increasing | Steady | Lower |
| Leaf Lettuce (24 ct) | Increasing | Steady | Lower |
| Romaine Lettuce (24 ct) | Increasing | Steady-Available | Higher |
| Mesculin Mix (3 lb) Term | Increasing | Steady-Short | Lower |
| Broccoli (14 ct) | Decreasing | Steady-Available | Lower |
| Squash (1/2 bushel) | Steady | Steady | Steady |
| Zucchini (1/2 bushel) | Steady | Available | Lower |
| Green Beans (bushel) | Increasing | Steady | Lower |
| Spinach (flat 24) | Steady | Steady-Available | Lower |
| Mushrooms (10 lb lg) Term | Steady | Short | Higher |
| Cucumbers (bushel) | Increasing | Steady | Higher |
| Pickles (200-300 ct) Term | Steady | Steady | Lower |
| Asparagus (sm) | Steady | Steady | Lower |
| Freight (truck CA-Cty Av) | Decreasing | Steady-Short | Higher |