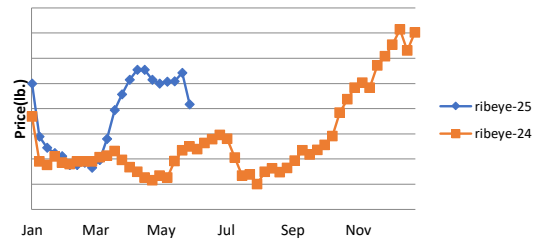


Beef, Veal- The CME JUN cattle contract, now the nearest on the board, was up 0.6% to \$215.62/cwt after a volatile week of trading. The choice and select beef cutout were both higher as of Thursday night, with the choice closing up 1% to \$366.09/cwt and the select higher 1% to \$353.64/cwt. Breaking out the choice cutout, the bone-in export rib was flat at \$10.84/lb, but the boneless ribeye was down \$0.82 to \$12.52/lb. The loin complex was flat to a touch higher last week. Choice shortloins were up \$0.07 to \$9.86/lb, and the choice striploins were higher by 0.13 to \$11.34/lb. Choice top sirloins were up \$0.33 to \$6.80/lb, while choice tenderloins were flat at \$14.30/lb. The end cuts (chucks and rounds) were mixed across the segments. In the chuck segment, chuck rolls were higher by \$0.13 to \$4.17/lb, and shoulder clods were up \$0.12 to \$3.81/lb last week. In the round complex, insides rounds were down \$0.10 to \$3.79/lb, and bottom round flats were higher by \$0.10 to \$3.72/lb. The ground beef and trim markets were higher. Ground beef 81% was up \$0.03 to \$3.62/lb. Within the trim segment, 50% trim rose \$0.07 to \$1.32/lb, while 90% lean trim was higher to \$3.81/lb. Looking ahead, the beef market is seeing upward pressure as cash cattle prices increase. With reduced or subdued harvests expected to continue in the short term, beef prices are projected to receive further support. The Average, USDA, FOB per pound.

Description	Market Trend	Supplies	Price vs. Last Year
Live Cattle (Steer)	Increasing	Short	Higher
Feeder Cattle Index (CME)	Increasing	Steady	Higher
Ground Beef 81/19	Increasing	Short	Higher
Ground Chuck	Increasing	Short	Higher
109 Export Rib (ch)	Increasing	Steady	Higher
109 Export Rib (pr)	Decreasing	Available	Higher
112a Ribeye (ch)	Decreasing	Short	Higher
112a Ribeye (pr)	Decreasing	Available	Higher
114a Chuck, Shlder Cld(ch)	Increasing	Short	Higher
116 Chuck (sel)	Increasing	Short	Higher
116 Chuck (ch)	Increasing	Short	Higher
116b Chuck Tender (ch)	Increasing	Steady	Higher
120 Brisket (ch)	Increasing	Short	Higher
120a Brisket (ch)	Decreasing	Short	Higher
121c Outside Skirt (ch/sel)	Decreasing	Short	Higher
121d Inside Skirt (ch/sel)	Increasing	Short	Higher
121e Cap & Wedge	Decreasing	Steady	Higher
167a Knuckle, Trimmed (ch)	Increasing	Steady-Short	Higher
168 Inside Round (ch)	Decreasing	Short	Higher
169 Top Round (ch)	Decreasing	Short	Higher
171b Outside Round (ch)	Increasing	Short	Higher
174 Short Loin (ch 0x1)	Increasing	Short	Higher
174 Short Loin (pr 2x3)	Increasing	Steady-Short	Higher
180 0x1 Strip (ch)	Increasing	Short	Higher
180 0x1 Strip (pr)	Increasing	Steady	Higher
184 Top Butt, boneless (ch)	Increasing	Short	Higher
184 Top Butt, boneless (pr)	Steady	Short	Higher
184-3 Top Butt, bnls (ch)	Increasing	Short	Higher
185a Sirloin Flap (ch)	Increasing	Short	Higher
185c Loin, Tri-Tip (ch)	Increasing	Short	Higher
189a Tender (sel, 5 lb & up)	Increasing	Short	Higher
189a Tender (ch, 5 lb & up)	Increasing	Steady-Short	Higher
189a Tender (pr, heavy)	Decreasing	Steady-Available	Higher
193 Flank Steak (ch)	Increasing	Short	Higher
50% Trimmings	Increasing	Short	Higher
65% Trimmings	Increasing	Short	Higher
75% Trimmings	Increasing	Short	Higher
85% Trimmings	Increasing	Short	Higher
90% Trimmings	Increasing	Short	Higher
90% Imported Beef (frz)	Increasing	Steady-Short	Higher
95% Imported Beef (frz)	Decreasing	Short	Higher

112a Choice Beef Ribeye (heavy)



81/19 Ground Beef

