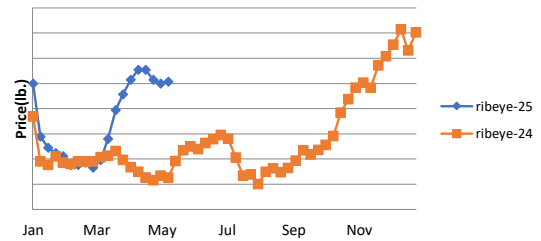


Beef, Veal- The CME JUN cattle contract, now the nearest on the board, was up 2.5% to \$214.25/cwt, and the other futures contracts also traded anywhere from 2-3% higher. The choice and select beef cutout were both higher as of Thursday night with the choice closing up 1% to \$347.89/cwt and the select higher by 3% to \$333.20/cwt. Breaking out the choice cutout, the bone-in export rib was flat at \$11.12/lb, and the boneless ribeye was down 1% to \$13.27/lb. The loin complex was mixed last week. Choice shortloins were up by 2% to \$9.42/lb, and the choice striploins were flat at \$10.52/lb. Choice top sirloins were higher by 3% to \$6.37/lb, while choice tenderloins were down 3% to \$13.27/lb. In the round complex, inside rounds were down 2% to \$3.61/lb, but bottom round flats were higher by 2% to \$3.49/lb. The ground beef and trim markets were mixed. Ground beef 81% was up 3% to \$3.31/lb. Within the trim segment, 50% trim dropped 7% to \$1.11/lb, while 90% lean trim was down to \$3.75/lb. Looking ahead, beef packers are facing increasing pressure as cash cattle prices rise. The harvest rate has significantly decreased compared to last year, resulting in substantial margin losses for packers. This trend of reduced harvests is likely to continue over the next week or two, which is expected to further bolster beef prices. The Average, USDA, FOB per pound.

Description	Market Trend	Supplies	Price vs. Last Year
Live Cattle (Steer)	Increasing	Short	Higher
Feeder Cattle Index (CME)	Increasing	Short	Higher
Ground Beef 81/19	Increasing	Short	Higher
Ground Chuck	Increasing	Steady-Short	Higher
109 Export Rib (ch)	Increasing	Steady-Short	Higher
109 Export Rib (pr)	Decreasing	Steady-Available	Higher
112a Ribeye (ch)	Increasing	Steady-Short	Higher
112a Ribeye (pr)	Increasing	Steady-Available	Higher
114a Chuck, Shlder Cld(ch)	Increasing	Steady	Higher
116 Chuck (sel)	Increasing	Steady	Higher
116 Chuck (ch)	Decreasing	Steady	Higher
116b Chuck Tender (ch)	Decreasing	Steady-Available	Higher
120 Brisket (ch)	Increasing	Short	Higher
120a Brisket (ch)	Increasing	Short	Higher
121c Outside Skirt (ch/sel)	Increasing	Steady-Short	Lower
121d Inside Skirt (ch/sel)	Increasing	Short	Higher
121e Cap & Wedge	Decreasing	Steady-Available	Higher
167a Knuckle, Trimmed (ch)	Increasing	Steady	Higher
168 Inside Round (ch)	Increasing	Steady-Short	Higher
169 Top Round (ch)	Increasing	Steady-Short	Higher
171b Outside Round (ch)	Increasing	Steady	Higher
174 Short Loin (ch 0x1)	Increasing	Short	Higher
174 Short Loin (pr 2x3)	Decreasing	Steady-Short	Higher
180 0x1 Strip (ch)	Decreasing	Steady	Higher
180 0x1 Strip (pr)	Increasing	Steady	Higher
184 Top Butt, boneless (ch)	Decreasing	Short	Higher
184 Top Butt, boneless (pr)	Steady	Short	Higher
184-3 Top Butt, bnls (ch)	Increasing	Short	Higher
185a Sirloin Flap (ch)	Increasing	Short	Higher
185c Loin, Tri-Tip (ch)	Increasing	Short	Higher
189a Tender (sel, 5 lb & up)	Increasing	Steady-Short	Higher
189a Tender (ch, 5 lb & up)	Decreasing	Steady-Available	Lower
189a Tender (pr, heavy)	Decreasing	Steady-Available	Higher
193 Flank Steak (ch)	Increasing	Short	Higher
50% Trimmings	Decreasing	Steady	Higher
65% Trimmings	Increasing	Steady	Higher
75% Trimmings	Increasing	Short	Higher
85% Trimmings	Increasing	Steady-Available	Higher
90% Trimmings	Increasing	Steady	Higher
90% Imported Beef (frz)	Decreasing	Steady-Short	Higher
95% Imported Beef (frz)	Decreasing	Short	Higher

112a Choice Beef Ribeye (heavy)



81/19 Ground Beef

